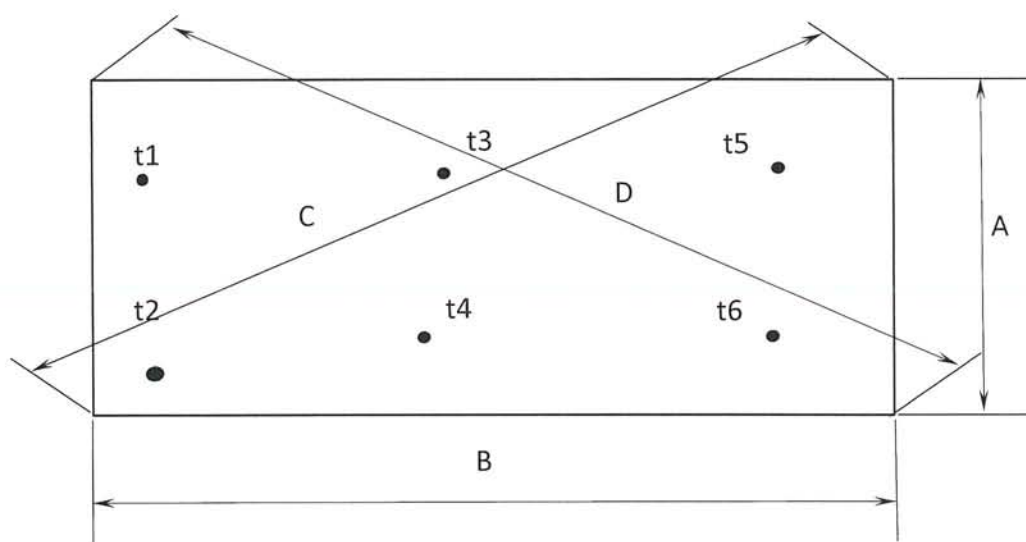


DIMENSIONAL AND VISUAL RECEIVING MATERIAL INSPECTION REPORT

Project	: POBOYA 2000 TPD EXPANSION	Item Name	MATERIAL PLATE	Report No.	: 05-DVIR-HEI-10-25
Client	: PT. CITRA PALU MINERALS	Size	PL. 10 x 1829 x 6096	Date	: October 22, 2025
RICR No.	: QA/HEI/RICR/E2502-02	Specification/ Heat. No.	A36 / 16G2501	Page No.	: 1 of 2

SKETCH : PLATE T: 10 x 1829 x 6096 mm



dimension in mm

Point Inspected	A	B	C	D	t1	t2	t3	t4	t5	t6	-	-	-	-
Design	1829	6096	6364	6364	10	10	10	10	10	10				
Tolerance	± 10	± 10	± 10	± 10	± 0.7	± 0.7	± 0.7	± 0.7	± 0.7	± 0.7				
Actual	1832	6010	6370	6370	10	10.1	10	10	9.9	10				

QUANTITY : 10 PCS

Remarks : Random Check

RESULT OF VISUAL INSPECTION



ACCEPTED



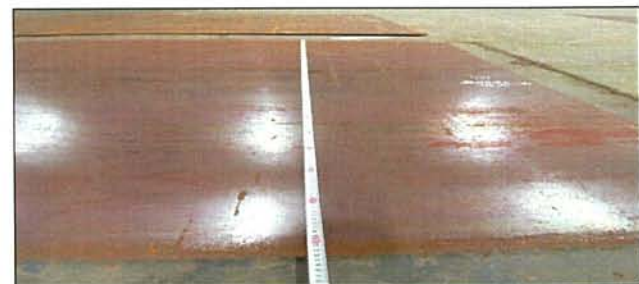
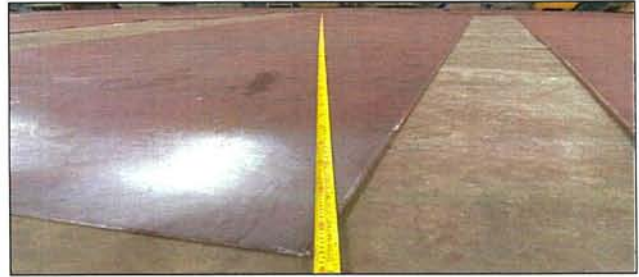
REJECTED

	Inspected by	Witnessed/ Reviewed by	Witnessed/ Reviewed by	Witnessed/ Approved by
Company	PT. Hanazono Engineering Indonesia		COMO ENGINEERS	PT Citra Palu Minerals
Signature & Name	 Benridho	 Rusnandi		Irfan
Date	Oct 23, 2025	Oct 27 2025		

DIMENSIONAL AND VISUAL RECEIVING MATERIAL INSPECTION REPORT

Project	: POBOYA 2000 TPD EXPANSION	Item Name	MATERIAL PLATE	Report No.	: 05-DVIR-HEI-10-25
Client	: PT. CITRA PALU MINERALS	Size	PL. 10 x 1829 x 6096	Date	: October 22, 2025
RICR No.	: QA/HEI/RICR/E2502-02	Specification/ Heat. No.	A36 / 16G2501	Page No.	: 2 of 2

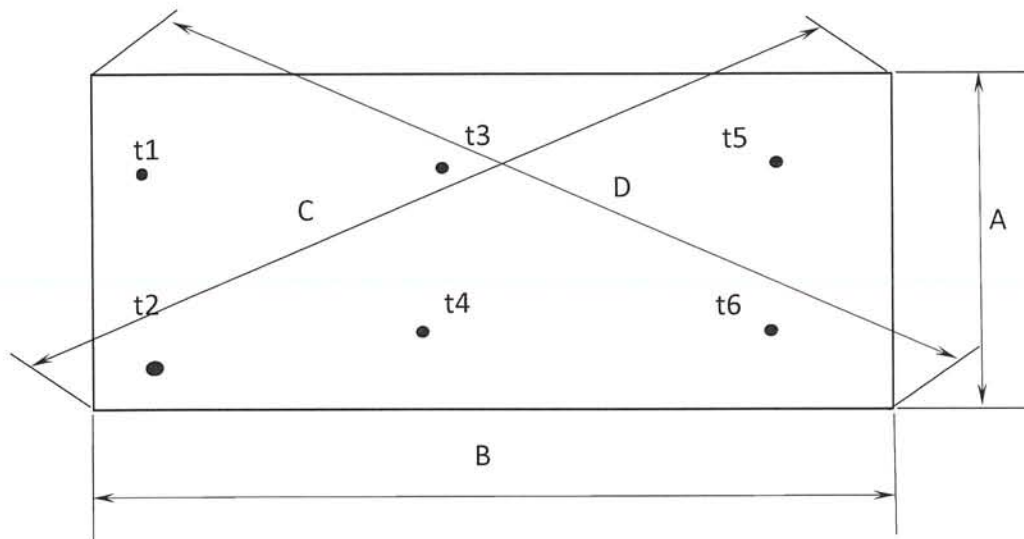
PHOTOGRAPH



DIMENSIONAL AND VISUAL RECEIVING MATERIAL INSPECTION REPORT

Project	: POBOYA 2000 TPD EXPANSION	Item Name	MATERIAL PLATE	Report No.	: 06-DVIR-HEI-10-25
Client	: PT. CITRA PALU MINERALS	Size	PL. 10 x 1829 x 6096	Date	: October 22, 2025
RICR No.	: QA/HEI/RICR/E2502-02	Specification/ Heat. No.	A36 / 18G2511	Page No.	: 1 of 2

SKETCH : PLATE T: 10 x 1829 x 6096 mm



dimension in mm

Point Inspected	A	B	C	D	t1	t2	t3	t4	t5	t6	-	-	-	-
Design	1829	6096	6364	6364	10	10	10	10	10	10				
Tolerance	± 10	± 10	± 10	± 10	± 0.7	± 0.7	± 0.7	± 0.7	± 0.7	± 0.7				
Actual	1831	6011	6370	6371	10	9.8	10	9.8	9.9	10				

QUANTITY : 10 PCS

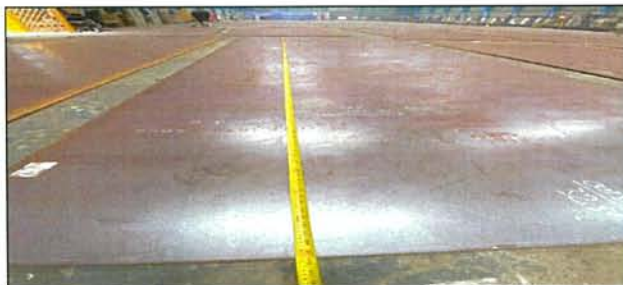
Remarks : Random Check

RESULT OF VISUAL INSPECTION		<input checked="" type="checkbox"/> ACCEPTED	<input type="checkbox"/> REJECTED	
	Inspected by	Witnessed/ Reviewed by	Witnessed/ Reviewed by	Witnessed/ Approved by
Company	PT. Hanazono Engineering Indonesia		COMO ENGINEERS	PT Citra Palu Minerals
Signature & Name	 Benridho		 Rusnandi	Irfan
Date	Oct 23, 2025	Oct 24 2025		

DIMENSIONAL AND VISUAL RECEIVING MATERIAL INSPECTION REPORT

Project	: POBOYA 2000 TPD EXPANSION	Item Name	MATERIAL PLATE	Report No.	: 06-DVIR-HEI-10-25
Client	: PT. CITRA PALU MINERALS	Size	PL. 10 x 1829 x 6096	Date	: October 22, 2025
RICR No.	: QA/HEI/RICR/E2502-02	Specification/ Heat. No.	A36 / 18G2511	Page No.	: 2 of 2

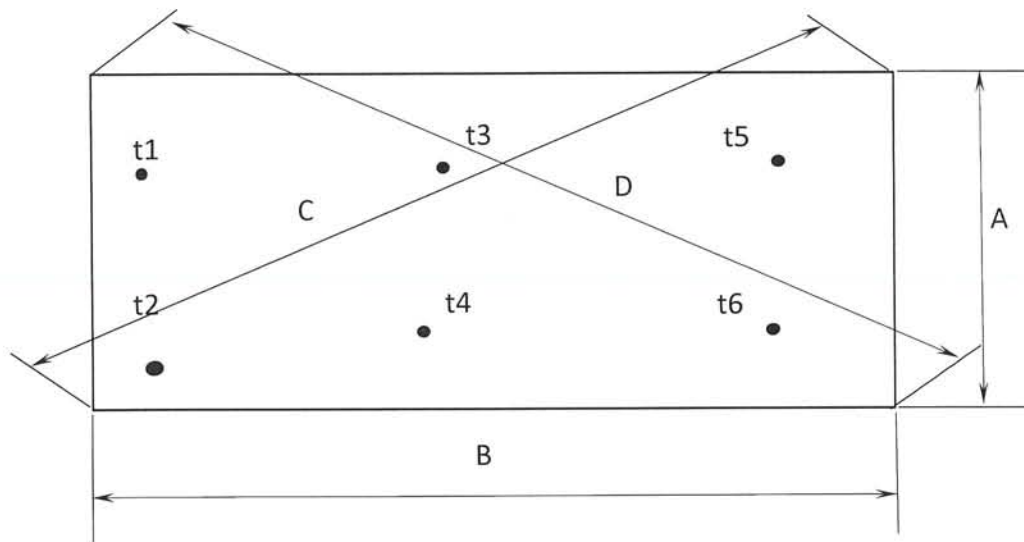
PHOTOGRAPH



DIMENSIONAL AND VISUAL RECEIVING MATERIAL INSPECTION REPORT

Project	: POBOYA 2000 TPD EXPANSION	Item Name	MATERIAL PLATE	Report No.	: 07-DVIR-HEI-10-25
Client	: PT. CITRA PALU MINERALS	Size	PL. 10 x 1829 x 6096	Date	: October 22, 2025
RICR No.	: QA/HEI/RICR/E2502-02	Specification/ Heat. No.	A36 / 18G2515	Page No.	: 1 of 2

SKETCH : PLATE T: 10 x 1829 x 6096 mm



dimension in mm

Point Inspected	A	B	C	D	t1	t2	t3	t4	t5	t6	-	-	-	-
Design	1829	6096	6364	6364	10	10	10	10	10	10				
Tolerance	± 10	± 10	± 10	± 10	± 0,7	± 0,7	± 0,7	± 0,7	± 0,7	± 0,7				
Actual	1832	6010	6370	6370	10	10	9.8	10	9.9	9.9				

QUANTITY : 10 PCS

Remarks : Random Check

RESULT OF VISUAL INSPECTION



ACCEPTED



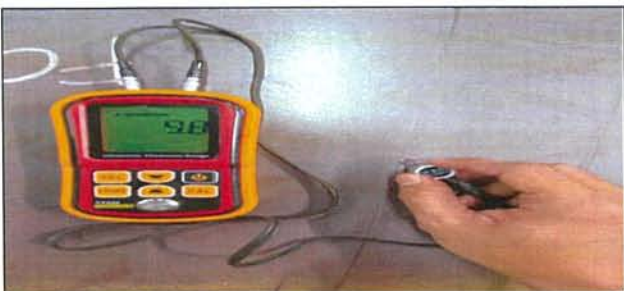
REJECTED

	Inspected by	Witnessed/ Reviewed by	Witnessed/ Reviewed by	Witnessed/ Approved by
Company	PT. Hanazono Engineering Indonesia	COMO ENGINEERS		PT Citra Palu Minerals
Signature & Name	 Benridho	 Rusnandi		Irfan
Date	OCT 23, 2015	OCT 27, 2025		

DIMENSIONAL AND VISUAL RECEIVING MATERIAL INSPECTION REPORT

Project	: POBOYA 2000 TPD EXPANSION	Item Name	MATERIAL PLATE	Report No.	: 07-DVIR-HEI-10-25
Client	: PT. CITRA PALU MINERALS	Size	PL. 10 x 1829 x 6096	Date	: October 22, 2025
RICR No.	: QA/HEI/RICR/E2502-02	Specification/ Heat. No.	A36 / 18G2515	Page No.	: 2 of 2

PHOTOGRAPH



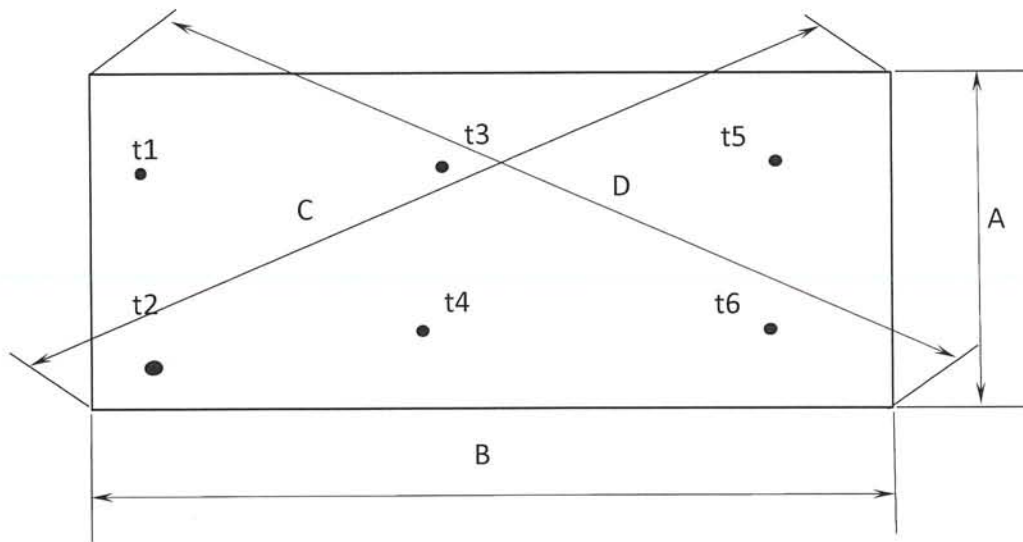


PT. HANAZONO Engineering Indonesia
We are always partner with you

DIMENSIONAL AND VISUAL RECEIVING MATERIAL INSPECTION REPORT

Project	: POBOYA 2000 TPD EXPANSION	Item Name	MATERIAL PLATE	Report No.	: 08-DVIR-HEI-10-25
Client	: PT. CITRA PALU MINERALS	Size	PL. 10 x 1829 x 6096	Date	: October 22, 2025
RICR No.	: QA/HEI/RICR/E2502-02	Specification/ Heat. No.	A36 / 2464057	Page No.	: 1 of 2

SKETCH : PLATE T: 10 x 1829 x 6096 mm



dimension in mm

Point Inspected	A	B	C	D	t1	t2	t3	t4	t5	t6	-	-	-	-
Design	1829	6096	6364	6364	10	10	10	10	10	10				
Tolerance	± 10	± 10	± 10	± 10	± 0,7	± 0,7	± 0,7	± 0,7	± 0,7	± 0,7				
Actual	1832	6010	6370	6370	9.9	10	10	10	10	10				

QUANTITY : 10 PCS

Remarks : Random Check

RESULT OF VISUAL INSPECTION



ACCEPTED



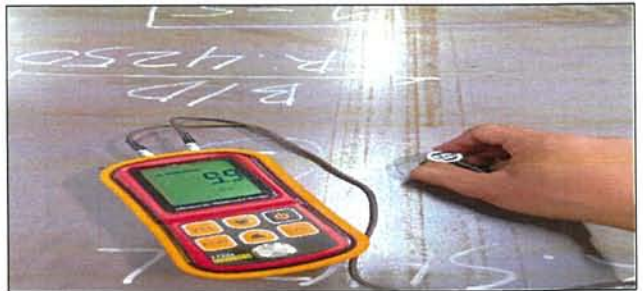
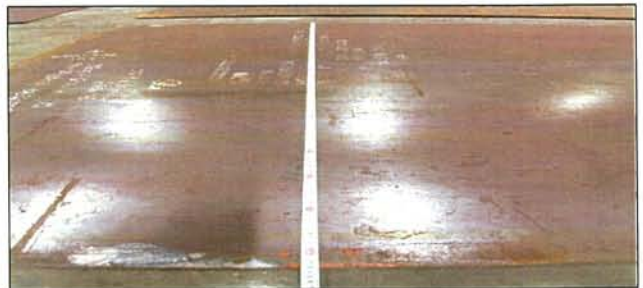
REJECTED

	Inspected by	Witnessed/ Reviewed by	Witnessed/ Reviewed by	Witnessed/ Approved by
Company	PT. Hanazono Engineering Indonesia		COMO ENGINEERS	PT Citra Palu Minerals
Signature & Name	 Benridho	 Rusnandi		Irfan
Date	Oct 23, 2025	Oct 27, 2025		

DIMENSIONAL AND VISUAL RECEIVING MATERIAL INSPECTION REPORT

Project	: POBOYA 2000 TPD EXPANSION	Item Name	MATERIAL PLATE	Report No.	: 08-DVIR-HEI-10-25
Client	: PT. CITRA PALU MINERALS	Size	PL. 10 x 1829 x 6096	Date	: October 22, 2025
RICR No.	: QA/HEI/RICR/E2502-02	Specification/ Heat. No.	A36 / 2464057	Page No.	: 2 of 2

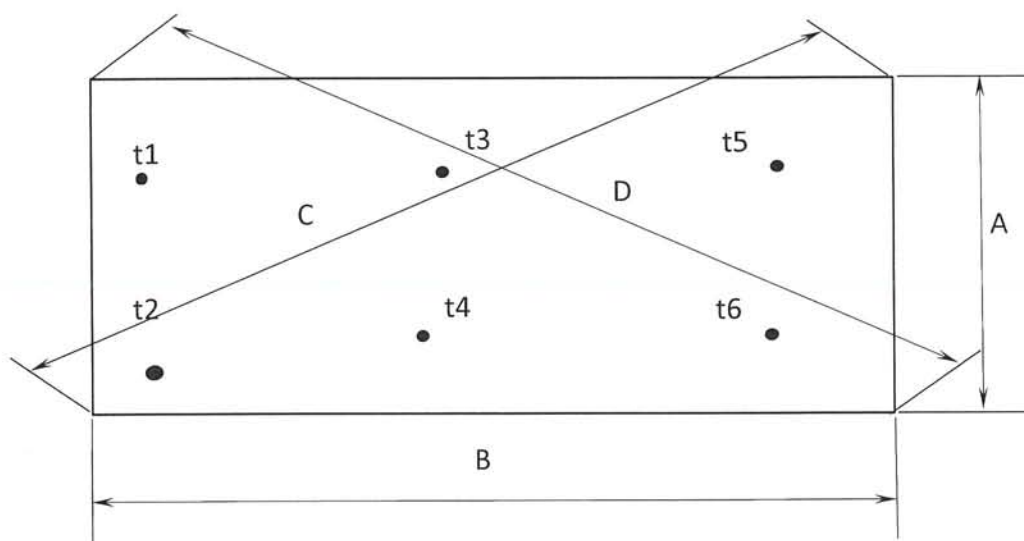
PHOTOGRAPH



DIMENSIONAL AND VISUAL RECEIVING MATERIAL INSPECTION REPORT

Project	: POBOYA 2000 TPD EXPANSION	Item Name	MATERIAL PLATE	Report No.	: 09-DVIR-HEI-10-25
Client	: PT. CITRA PALU MINERALS	Size	PL. 10 x 1829 x 6096	Date	: October 22, 2025
RICR No.	: QA/HEI/RICR/E2502-02	Specification/ Heat. No.	A36 / 2464052	Page No.	: 1 of 2

SKETCH : PLATE T: 10 x 1829 x 6096 mm



dimension in mm

Point Inspected	A	B	C	D	t1	t2	t3	t4	t5	t6	-	-	-	-
Design	1829	6096	6364	6364	10	10	10	10	10	10				
Tolerance	± 10	± 10	± 10	± 10	± 0.7	± 0.7	± 0.7	± 0.7	± 0.7	± 0.7				
Actual	1832	6010	6370	6370	10	10	10	9.8	10	10				

QUANTITY : 14 PCS

Remarks : Random Check

RESULT OF VISUAL INSPECTION



ACCEPTED



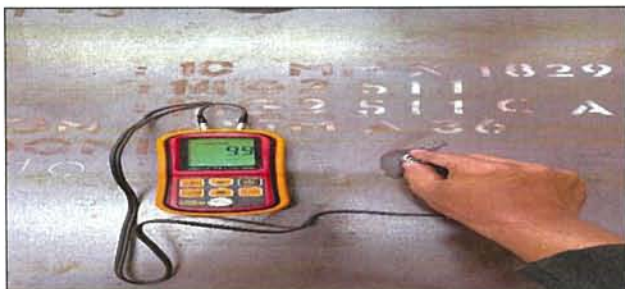
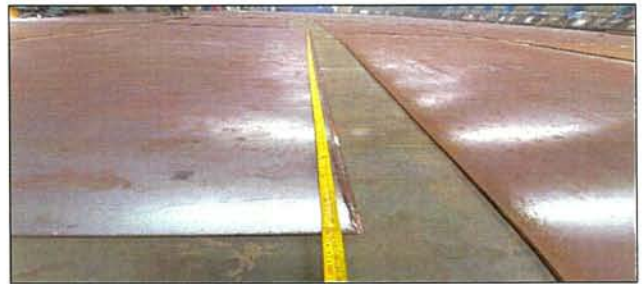
REJECTED

	Inspected by	Witnessed/ Reviewed by	Witnessed/ Reviewed by	Witnessed/ Approved by
Company	PT. Hanazono Engineering Indonesia		COMO ENGINEERS	PT Citra Palu Minerals
Signature & Name	 Benridho	 Rusnandi		Irfan
Date	04 23, 2025	04 27, 2025		

DIMENSIONAL AND VISUAL RECEIVING MATERIAL INSPECTION REPORT

Project	: POBOYA 2000 TPD EXPANSION	Item Name	MATERIAL PLATE	Report No.	: 09-DVIR-HEI-10-25
Client	: PT. CITRA PALU MINERALS	Size	PL. 10 x 1829 x 6096	Date	: October 22, 2025
RICR No.	: QA/HEI/RICR/E2502-02	Specification/ Heat. No.	A36 / 2464052	Page No.	: 2 of 2

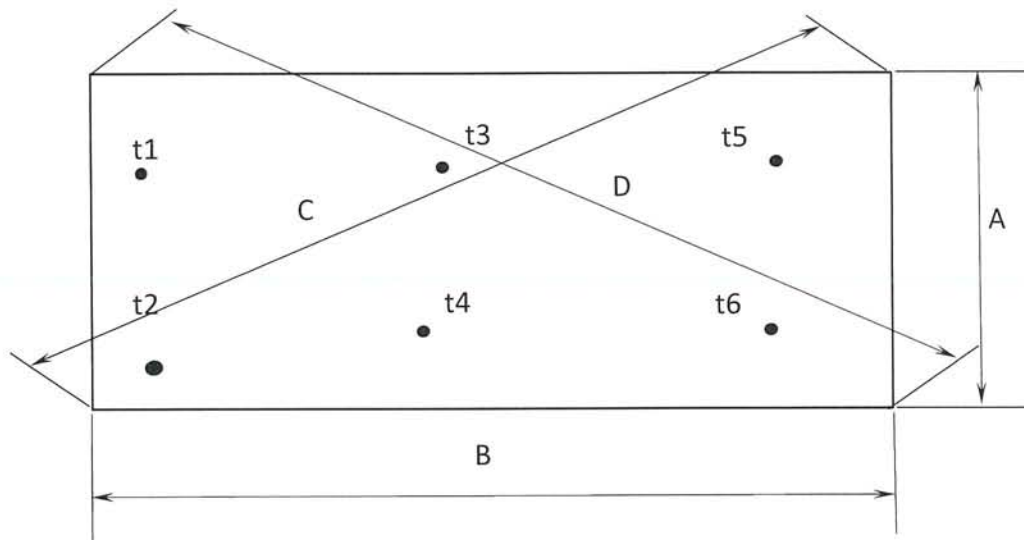
PHOTOGRAPH



DIMENSIONAL AND VISUAL RECEIVING MATERIAL INSPECTION REPORT

Project	: POBOYA 2000 TPD EXPANSION	Item Name	MATERIAL PLATE	Report No.	: 10-DVIR-HEI-10-25
Client	: PT. CITRA PALU MINERALS	Size	PL. 10 x 1524 x 6096	Date	: October 23, 2025
RICR No.	: QA/HEI/RICR/E2502-02	Specification/ Heat. No.	A36 / 334783	Page No.	: 1 of 2

SKETCH : PLATE T: 10 x 1524 x 6096 mm



dimension in mm

Point Inspected	A	B	C	D	t1	t2	t3	t4	t5	t6	-	-	-	-
Design	1524	6096	6283	6283	10	10	10	10	10	10				
Tolerance	± 10	± 10	± 10	± 10	± 0.7	± 0.7	± 0.7	± 0.7	± 0.7	± 0.7				
Actual	1530	6010	6290	6290	9.8	10.1	10	9.9	9.9	10				

QUANTITY : 10 PCS

Remarks : Random Check

RESULT OF VISUAL INSPECTION



ACCEPTED



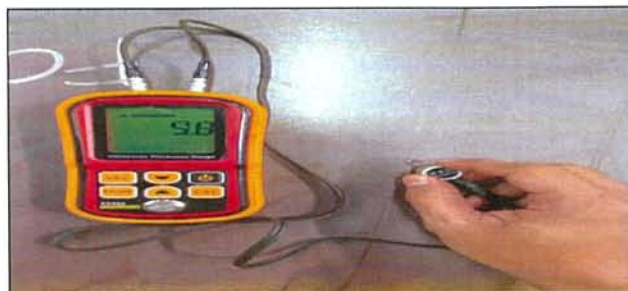
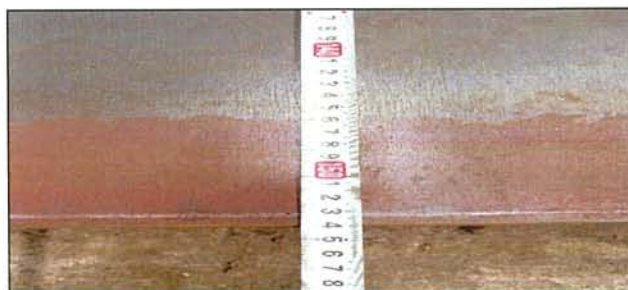
REJECTED

	Inspected by	Witnessed/ Reviewed by	Witnessed/ Reviewed by	Witnessed/ Approved by
Company	PT. Hanazono Engineering Indonesia		COMO ENGINEERS	PT Citra Palu Minerals
Signature & Name	 Benridho	 Rusnandi		Irfan
Date	Okt 24, 2025	OCT 27, 2025		

DIMENSIONAL AND VISUAL RECEIVING MATERIAL INSPECTION REPORT

Project	: POBOYA 2000 TPD EXPANSION	Item Name	MATERIAL PLATE	Report No.	: 10-DVIR-HEI-10-25
Client	: PT. CITRA PALU MINERALS	Size	PL. 10 x 1524 x 6096	Date	: October 23, 2025
RICR No.	: QA/HEI/RICR/E2502-02	Specification/ Heat. No.	A36 / 334783	Page No.	: 2 of 2

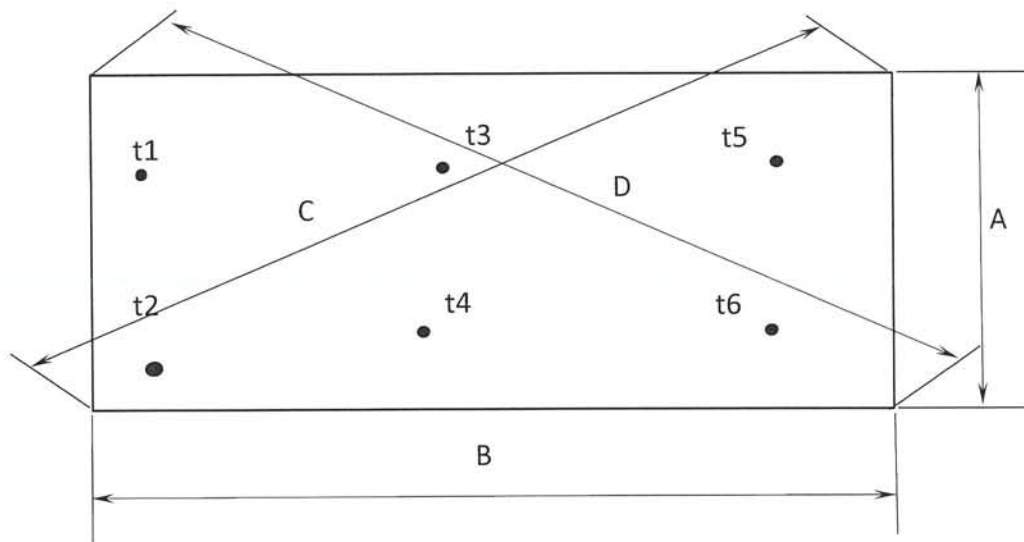
PHOTOGRAPH



DIMENSIONAL AND VISUAL RECEIVING MATERIAL INSPECTION REPORT

Project	: POBOYA 2000 TPD EXPANSION	Item Name	MATERIAL PLATE	Report No.	: 11-DVIR-HEI-10-25
Client	: PT. CITRA PALU MINERALS	Size	PL. 10 x 1524 x 6096	Date	: October 23, 2025
RICR No.	: QA/HEI/RICR/E2502-02	Specification/ Heat. No.	A36 / 334783	Page No.	: 1 of 2

SKETCH : PLATE T: 10 x 1524 x 6096 mm



dimension in mm

Point Inspected	A	B	C	D	t1	t2	t3	t4	t5	t6	-	-	-	-
Design	1524	6096	6283	6283	10	10	10	10	10	10				
Tolerance	± 10	± 10	± 10	± 10	± 0.7	± 0.7	± 0.7	± 0.7	± 0.7	± 0.7				
Actual	1530	6010	6291	6292	10	9.9	10	9.9	9.9	10				

QUANTITY : 8 PCS

Remarks : Random Check

RESULT OF VISUAL INSPECTION		<input checked="" type="checkbox"/> ACCEPTED	<input type="checkbox"/> REJECTED	
	Inspected by	Witnessed/ Reviewed by	Witnessed/ Reviewed by	Witnessed/ Approved by
Company	PT. Hanazono Engineering Indonesia		COMO ENGINEERS	PT Citra Palu Minerals
Signature & Name	 Benridho		 Rusnandi	Irfan
Date	04 24, 2025	08 27 2025		

DIMENSIONAL AND VISUAL RECEIVING MATERIAL INSPECTION REPORT

Project	: POBOYA 2000 TPD EXPANSION	Item Name	MATERIAL PLATE	Report No.	: 11-DVIR-HEI-10-25
Client	: PT. CITRA PALU MINERALS	Size	PL. 10 x 1524 x 6096	Date	: October 23, 2025
RICR No.	: QA/HEI/RICR/E2502-02	Specification/ Heat. No.	A36 / 334783	Page No.	: 2 of 2

PHOTOGRAPH

